



MACHINE TOOLS

Buckets and attachments for mini-excavators
quick couplers, buckets, rippers, grading bars

Located in Ostrołęka, the heart of the Kurpie region, **Hydro-Instal Attachments** stands as a testament to genuine craftsmanship. Our dedication to quality ensures you can **always rely on our products and services**.

Hydro-Instal Ostrołęka team

Hydro-Instal T.Sieruta B.Sieruta sp.j.
ul. Bohaterów Westerplatte 11
07-410 Ostrołęka
Poland
EU VAT ID: PL7581556948



sieruta.com

info@sieruta.com

S-System - OPEN-S REVERSIBLE SCANDINAVIAN QUICK-COUPLERS

- **Automatic**, semi-automatic (manual open), and **swiveling** versions available
- Quick-hitches made according to **Open-S standard**
- **Reversible**
- **Safety features** (double profiled front hook, visual indicator of engagement, rear mechanical lock)
- Most widely adopted in **Nordic & Scandinavian** countries
- **Lightweight & robust** construction
- Optional **lifting hook**



CW - CW-SYSTEM COMPATIBLE QUICK-COUPLERS

- Compatible with **CW system** brackets
- High **breakout force** remaining
- Proven **wedge design**
- Manual, automatic and swiveling versions available
- **Safety features** (pilot operated check valve)
- **Lifting hook** as option
- Most widely adopted in **the Netherlands & Belgium**



MS - MS-SYSTEM COMPATIBLE QUICK-COUPLERS

- Compatible with **MS / SY system** brackets
- **Cast steel** body
- **Long-life** design
- **Automatic**, manual, semi-automatic, and **swiveling** options available
- **Safety features** (pilot check valve, front pin lock, visual safety indicator, rear pin lock)
- **Reversible** when used with SY brackets
- Most widely adopted in **Central Europe**



Pin-grabber - QUICK-COUPLER USING FACTORY BRACKETS

- Perfect for factory **OEM brackets**
- **Automatic**, manual, **swiveling** options available
- **Safety features** (pilot operated check valve)
- **Lifting hook** option
- New! **Patent-pending** Front Safety Lock



Founded in 1996

Manufacturing attachments since 2008

More than 45000 attachments delivered

Localised in Poland, 120 km from Warsaw capital & airport

Focus on quality & customer service



S-System SYMMETRICAL SCANDINAVIAN QUICK-COUPLERS



Automatic Hydraulically operated fully automatic S-System quick-couplers

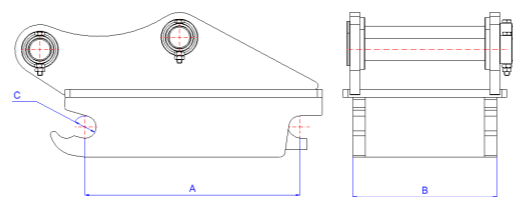


MODEL	A [mm]	B [mm]	C [mm]	CLASS [T]	WEIGHT [kg]
QC-S30-H/150	200	148	30	0.5 - 2	15
QC-S30-H/180	230	178	30	0.5 - 2	16
QC-S40-H	300	198	40	2 - 6	30
QC-S40-H/240	300	238	40	2 - 6	32
QC-S45-H	430	288	45	5 - 12	70
QC-S50	430	268	50	5 - 12	90
QC-S60	480	338	60	12 - 20	115
QC-S70	600	448	70	18 - 33	270
QC-S80	670	588	80	30 - 34	350

Hydraulic, **fully automatic** excavator quick coupler compatible with Open-S Nordic system. **Fully compliant** with EN 474-5 & ISO 13031:2023. Rear **mechanical safety lock** + hydraulic safety feature with pilot operated check valve. **Visual indicator** of engagement included.

Key highlights:

- **Fully Hydraulic:** Automatic, no manual effort.
- **Durable:** Built to last in the toughest environments.
- **Safe:** Advanced safety features to prevent accidental releases (double profiled front hook, visual indicator of engagement, mechanical safety lock)
- **Low Maintenance:** Easy upkeep for continuous operation.
- **Most widely adopted** in Nordic & Scandinavian countries



Manual Manually operated semi-automatic S-System quick-couplers

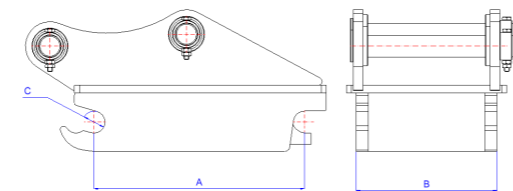


MODEL	A [mm]	B [mm]	C [mm]	CLASS [T]	WEIGHT [kg]
QC-S30-SA/150	200	148	30	0.5 - 2	15
QC-S30-SA/180	230	178	30	0.5 - 2	16
QC-S40-SA	300	198	40	2 - 6	30
QC-S40-SA/240	300	238	40	2 - 6	32
QC-S45-SA	430	288	45	5 - 12	70
QC-S50	430	268	50	5 - 12	90
QC-S60	480	338	60	12 - 20	115
QC-S70	600	448	70	18 - 33	270
QC-S80	670	588	80	30 - 34	350

Maximize efficiency with our Mechanically Operated **Semi-Automatic** S-System Quick-Couplers. Built for **reliability** and **ease of use**, these couplers ensure quick, **safe attachment changes** with **minimal downtime**.

Key features include:

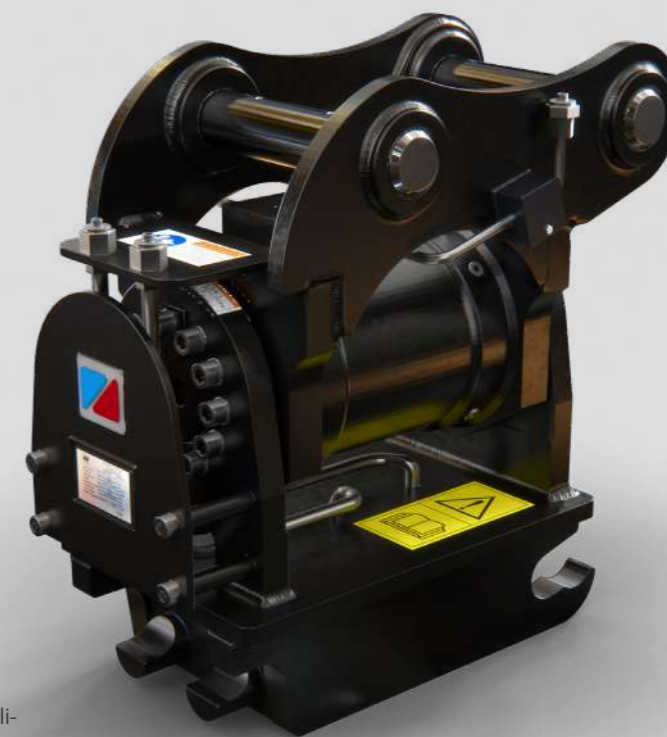
- **Semi-Automatic** Mechanism: Quick, manual engagement for fast changes.
- **Rugged Design:** Engineered for durability in demanding conditions.
- **Safety indicator:** operator can see when coupler is engaged
- **Easy Installation:** Simple setup for immediate use.



S-System SYMMETRICAL SCANDINAVIAN QUICK-COUPLERS



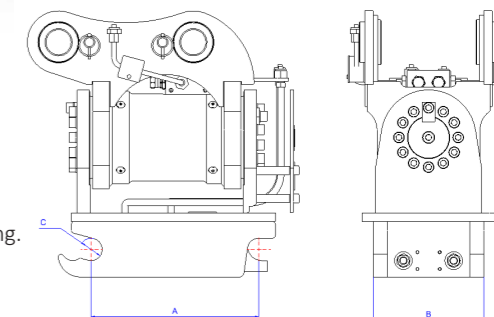
Tilt/Swivel Hydraulic-tilting quick-coupler fully automatic or semi-automatic S-System



Unlock unparalleled versatility with our Hydraulically Operated Tilting/Swiveling S-System Quick Couplers for excavators. Designed for precision and flexibility, these couplers redefine operational efficiency and productivity.

Key features include:

- **Full Mobility:** Enables tilting and swiveling for optimal positioning.
- **Hydraulic Operation:** Smooth action both ways 2x90 degrees total 180 degrees
- **Durable Construction:** Built to withstand harsh working environments.
- **Enhanced Safety:** Integrated safety features for reliable attachment securing.



MODEL	A [mm]	B [mm]	C [mm]	D [mm]	E [mm]	F [mm]	CLASS [T]	WEIGHT [kg]	TILT SIZE	HOLDING TORQUE [Nm]	WORKING PRESSURE [bar]	TILT ANGLE [deg]
QC-U-S30-H/150	200	148	30	280	215	317	0.5 - 2	41	100	2.4	210	180
QC-U-S30-H/180	230	178	30	280	258	365	0.5 - 2	42	100	2.4	210	180
QC-U-S40-H	300	198	40	370	287	475	2 - 6	90	125	8.2	210	180
QC-U-S40-H/240	300	238	40	370	345	475	2 - 6	92	125	8.2	210	180
QC-U-S45-H	430	288	45	420	417	682	5 - 12	212	200	24.0	210	180
QC-U-S50	430	268	50	460	388	682	5 - 12	232	200	24.0	210	180
QC-U-S60	480	338	60	550	490	760	12 - 20	317/351	250	40.0	250	100/140
QC-U-S70	600	448	70	650	650	950	18 - 33	635/692	290	80.0	250	100/140
QC-U-S80	670	588	80	740	852	1060	30 - 34	715/772	290	80.0	250	100/140

CW CW-SYSTEM COMPATIBLE QUICK-COUPERS

GENERAL PURPOSE DIGGING BUCKET CW

Automatic

Hydraulically operated fully automatic CW quick-couplers

Tilt/Swivel

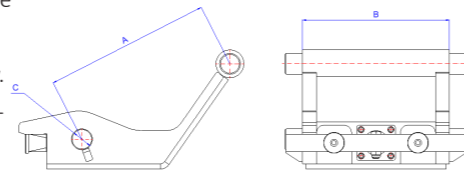
Hydraulic-tilting CW-System compatible quick-coupler, hydraulic or mechanical



Model	A [mm]	B [mm]	C [mm]	CLASS [T]	WEIGHT [kg]
CW-00	150	147	30	0 - 1	10
CW-05	200	175	40	1 - 3.5	25
CW-10	300	310	50	3.5 - 10.5	65
CW-20	475	550	60	7.5 - 15	190
CW-20 S	475	420	60	7.5 - 15	180
CW-30	475	550	60	15 - 25	230
CW-30 S	475	420	60	15 - 25	220
CW-40	475	550	60	20 - 30	240
CW-40 S	475	420	60	20 - 30	230
CW-45	570	690	90	25 - 45	450
CW-45 S	570	550	90	25 - 45	435



- **Fully Automatic System:** Enables quick attachment changes directly from the machine
- **CW Compatibility:** Designed for a perfect fit with CW-System attachments.
- **Robust Build:** Constructed to endure the toughest conditions for long-term reliability.
- **Safety First:** Incorporates advanced safety locks to prevent accidental releases, prioritizing operator and site safety.
- **Maintenance Simplicity:** Minimal maintenance requirements for maximum uptime and productivity.

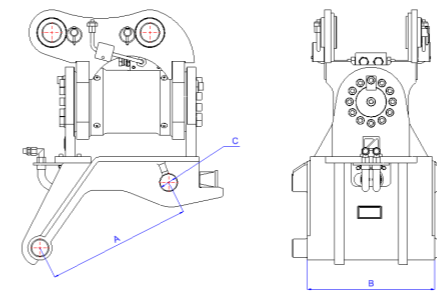


Manual

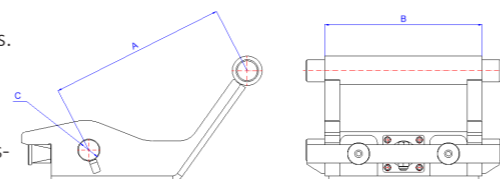
Manually operated mechanical CW quick-couplers



Model	A [mm]	B [mm]	C [mm]	CLASS [T]	WEIGHT [kg]
CW-00	150	147	30	0 - 1	10
CW-05	200	175	40	1 - 3.5	25
CW-10	300	310	50	3.5 - 10.5	65
CW-20	475	550	60	7.5 - 15	190
CW-20 S	475	420	60	7.5 - 15	180
CW-30	475	550	60	15 - 25	230
CW-30 S	475	420	60	15 - 25	220
CW-40	475	550	60	20 - 30	240
CW-40 S	475	420	60	20 - 30	230
CW-45	570	690	90	25 - 45	450
CW-45 S	570	550	90	25 - 45	435



- **Manual Action:** Easy, manual **locking mechanism** for quick attachment swaps.
- **CW Compatibility:** Perfectly tailored to fit CW "Verachttert" attachment standards.
- **Durable Design:** Built to last, even in the most challenging environments.
- **Enhanced Safety:** Features a manual safety lock to secure attachments firmly.
- **Streamlined Maintenance:** Designed for straightforward upkeep, ensuring consistent operation.



- **Full Range Motion:** Enables tilting / swiveling for superior attachment positioning.
- **Hydraulic Efficiency:** Facilitates swift, automatic changes from the comfort of the cab.
- Mechanical version also available (when low on hydraulic lines)
- **CW Compatibility:** Ensures seamless integration with CW-System attachments.
- **Rugged Durability:** Crafted to perform in the harshest conditions, guaranteeing longevity.
- **Safety Priority:** Equipped with safety mechanisms to secure attachments reliably.

Model	A [mm]	B [mm]	C [mm]	D [mm]	E [mm]	F [mm]	CLASS [T]	WEIGHT [kg]	TILT SIZE	HOLDING TORQUE [Nm]	WORKING PRESSURE [bar]	TILT ANGLE [deg]
CW-U-00	150	147	30	350	180	220	0 - 1	27	85	2.0	210	180
CW-U-05	200	175	40	420	235	295	1 - 3.5	67	115	4.3	210	180
CW-U-10	300	310	50	610	380	520	3.5 - 10.5	179	160	17.5	210	180
CW-U-20	475	550	60	710	650	665	7.5 - 15	356/376/396	240	34	250	100/140/180
CW-U-20 S	475	420	60	710	520	665	7.5 - 15	346/366/386	240	34	250	100/140/180
CW-U-30	475	550	60	710	650	665	15 - 25	499/531	260	43	250	100/140
CW-U-30 S	475	420	60	710	520	665	15 - 25	489/521	260	43	250	100/140
CW-U-40	475	550	60	710	650	665	20 - 30	574/614	270	54	250	100/140
CW-U-40 S	475	420	60	710	520	665	20 - 30	564/604	270	54	250	100/140
CW-U-45	570	690	90	1060	790	990	25 - 45	1146	350	54.0	250	100/140
CW-U-45 S	570	550	90	1060	650	990	25 - 45	1131	350	100.0	250	100

MS MS-SYSTEM COMPATIBLE QUICK-COUPLERS

Automatic Fully automatic hydraulic quick-couplers compatible with MS-System

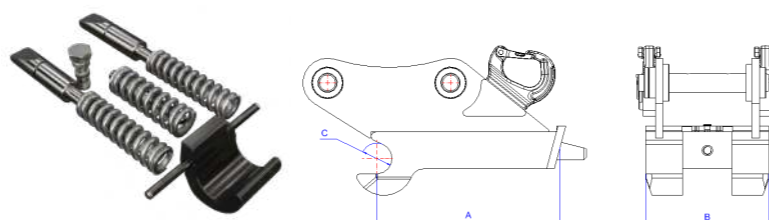


MODEL	A [mm]	B [mm]	C [mm]	CLASS [T]	WEIGHT [kg]
QC-HS-01	235	180	40	0.9 - 2.0	20
QC-HS-03	295	200	50	2.0 - 6.0	30
QC-HS-08	400	290	60	6.0 - 12	90
QC-HS-10	520	395	70	10 - 19	200
QC-HS-21	545	495	80	18 - 28	310

Highlights:

- **Front Mechanical Safety Lock:** bucket doesn't fall if rear wasn't engaged,
- **Rear Mechanical Safety Lock:** stiff springs hold engagement,
- **Third Hydraulic Lock:** pilot operated check valve,
- **Visual Indicator** of coupler state,
- Engineered for Precision: Cast steel body with CNC machining.

Fully automatic excavator quick coupler compatible with MS / SY system. **Fully compliant** with EN 474-5 & ISO 13031 and future EU directives. Front & Rear **mechanical safety locks** + additional third hydraulic safety feature with pilot operated check valve. **Visual indicator** of engagement included.



Manual Mechanical quick-coupler compatible with MS-System

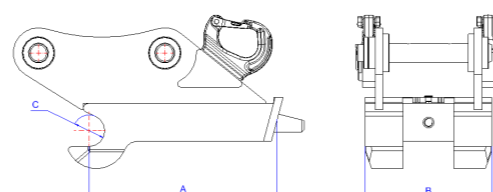


MODEL	A [mm]	B [mm]	C [mm]	CLASS [T]	WEIGHT [kg]
QC-MS-01	235	180	40	0.9 - 2.0	20
QC-MS-03	295	200	50	2 - 6	30
QC-MS-08	400	290	60	6 - 12	90
QC-MS-10	520	395	70	10 - 19	200
QC-MS-21	545	495	80	18 - 28	310

Key features:

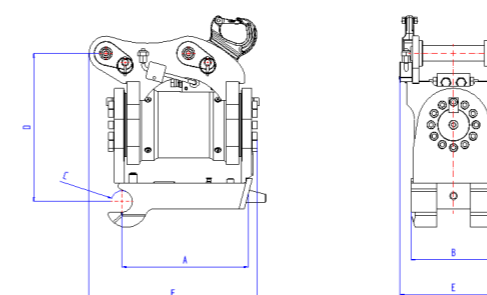
- **Mechanical action** operated by wrench (included).
- **Durable:** Built to last in the toughest environments.
- Less expensive than automatic model.
- **Low Maintenance:** Easy upkeep for continuous operation.

Manual, **mechanically operated** quick-hitch compatible with MS / SY system. **Semi-automatic** version available. **Long service life.** Cast steel body and CNC machining. Coupler retains **tight fit** after many hours of use. Wrench **included.**



MS-SYSTEM COMPATIBLE QUICK-COUPLERS LH

Tilt/Swivel Hydraulic-tilting MS-compatible quick coupler, hydraulic & mechanical



Key features include:

- **Full Mobility:** Enables tilting and swiveling for optimal positioning.
- **Hydraulic Operation:** Smooth action both ways 2x90 degrees
- **Durable Construction:** Built to withstand harsh working environments.
- **Enhanced Safety:** Integrated safety features for reliable attachment securing.

Unlock unparalleled **versatility** with our Hydraulic Tilt MS-compatible Quick Couplers for excavators. Designed for **precision and flexibility**, these couplers redefine operational **efficiency and productivity.**

MODEL	A [mm]	B [mm]	C [mm]	D [mm]	E [mm]	F [mm]	CLASS [T]	WEIGHT [kg]	TILT SIZE	HOLDING TORQUE [Nm]	WORKING PRESSURE [bar]	TILT ANGLE [DEG]
QC-U-HS-01	235	180	40	260	227	318	0.9 - 2.0	46	100	2.4	210	180
QC-U-HS-03	295	200	50	335	252	398	2.0 - 6.0	90	125	8.2	210	180
QC-U-HS-08	400	290	60	580	365	540	6.0 - 12	232	200	24.0	210	180
QC-U-HS-10	520	395	70	510	498	702	10 - 19	402/436	250	40.0	250	100/140
QC-U-HS-21	545	495	80	580	624	735	18 - 28	644/684	270	54.0	250	100/140

Pin-Grab

PIN-GRABBER "Miller" TYPE QUICK-COUPLERS

Automatic Fully automatic hydraulic pin-grab quick-coupler

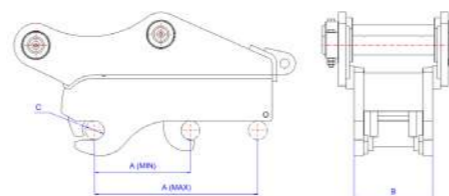


MODEL	A [mm]	B [mm]	C [mm]	CLASS [T]	WEIGHT [kg]
QC-PG-40	220-280	150	40	4 - 5	80
QC-PG-45	220-280	160	45	4 - 5	82
QC-PG-50	275-370	180	50	5 - 9	90
QC-PG-55	275-370	180	55	6 - 9	95
QC-PG-60	355-460	250	60	7 - 13	210
QC-PG-65	355-460	250	65	11 - 15	210
QC-PG-70	365-490	250	70	15 - 18	260
QC-PG-80	385-530	300	80	16 - 25	400
QC-PG-90	475-565	325	90	24 - 35	440
QC-PG-100	500-640	370	100	30 - 40	740

*Disclaimer: specific weight and dimensions depend on the model of excavator.
Data above is approximate.

Highlights:

- **Front Mechanical Safety Lock:** bucket doesn't fall if rear wasn't engaged,
- **Rear Mechanical Safety Lock:** stiff spring hold engagement,
- **Third Hydraulic Lock:** pilot operated check valve,
- **Visual Indicator** of coupler state.



Manual

Mechanical manual pin-grab quick-coupler

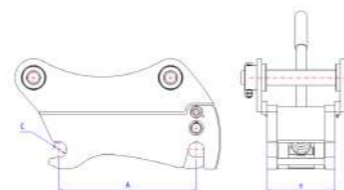


MODEL	A [mm]	B [mm]	C [mm]	CLASS [T]	WEIGHT [kg]
QC-ML-M-30	185	120	30	0.9 - 2	14
QC-ML-M-35	215	135	35	2 - 3	22
QC-ML-M-40	250	155	40	3 - 5	32
QC-ML-M-45	280	175	45	5 - 8	45
QC-ML-M-50	310	195	50	8 - 11	58
QC-ML-M-55	340	215	55	9 - 13	81
QC-ML-M-60	375	235	60	11 - 20	105
QC-ML-M-65	400	255	65	14 - 29	132
QC-ML-M-70	435	275	70	18 - 33	167
QC-ML-M-80	495	315	80	30 - 35	245

*Disclaimer: specific weight and dimensions depend on the model of excavator.
Data above is approximate.

Key features:

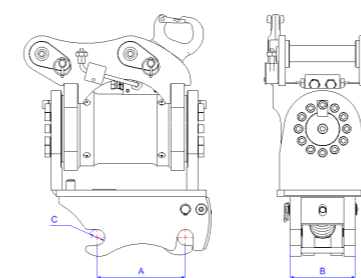
- **Mechanical action** operated by wrench (included).
- **Durable:** Built to last in the toughest environments.
- Cheaper than automatic model.
- **Low Maintenance:** Easy upkeep for continuous operation.



Pin-Grab

PIN-GRABBER "Miller" TYPE QUICK-COUPLERS

Tilt/Swivel Hydraulic-tilting pin-grab quick coupler, hydraulic & mechanical models



Key features include:

- **Full Mobility:** Enables tilting and swiveling for optimal positioning.
- **Hydraulic Operation:** Smooth action both ways 90 degrees
- **Durable Construction:** Built to withstand harsh working environments.
- **Variable Pin Centre Design:** pickup many different OEM attachments.
- Mechanical coupler when low on **hydraulic lines**.
- **Enhanced Safety:** Integrated safety features for reliable attachment securing.

MODEL	A [mm]	B [mm]	C [mm]	D [mm]	E [mm]	F [mm]	CLASS [T]	WEIGHT [kg]	TILT SIZE	HOLDING TORQUE [Nm]	WORKING PRESSURE [bar]	TILT ANGLE [deg]
QC-U-PG-40	220-280	150	40	382	248	485	4 - 5	140	125	8.2	210	180
QC-U-PG-45	220-280	160	45	392	264	485	4 - 5	142	125	8.2	210	180
QC-U-PG-50	275-370	180	50	453	297	640	5 - 9	204	160	17.5	210	180
QC-U-PG-55	275-370	180	55	453	297	640	6 - 9	209	160	17.5	210	180
QC-U-PG-60	355-460	250	60	580	410	792	7 - 13	352	200	24.0	210	180
QC-U-PG-65	355-460	250	65	620	410	802	11 - 15	376/396/416	240	34.0	250	100/140/180
QC-U-PG-70	365-490	250	70	668	410	812	15 - 18	462/496	250	40.0	250	100/140
QC-U-PG-80	385-530	300	80	740	492	915	16 - 25	669/701	260	43.0	250	100/140
QC-U-PG-90	475-565	325	90	805	533	972	24 - 35	805/862	290	80.0	250	100/140
QC-U-PG-100	500-640	370	100	965	606	1100	30 - 40	1435	350	90.0	250	100

*Disclaimer: specific weight and dimensions depend on the model of excavator. Data above is approximate.



Hydro-Instal T.Sieruta B.Sieruta sp.j.
ul. Bohaterów Westerplatte 11
07-410 Ostrołęka
Poland
EU VAT ID: PL7581556948



+48 505 778 308

info@sieruta.com

sieruta.com